



LEGISLATIVE LEADERS  
Rep. Ashley Aune, Sen. Doug Beck,  
Sen. Tony Lutkemeyer, Rep. Jon Patterson  
Moderated by Kara Cochran



MISSOURI CHAMBER  
FOUNDATION

MISSOURI CHAMBER  
FOUNDATION  
CAPITOL INSIGHT  
2025



**CAPITOL INSIGHT:**  
Preparing you for the 2026  
Legislative Session

January 6, 2026 • Jefferson City

**SPONSORSHIP  
OPPORTUNITIES**



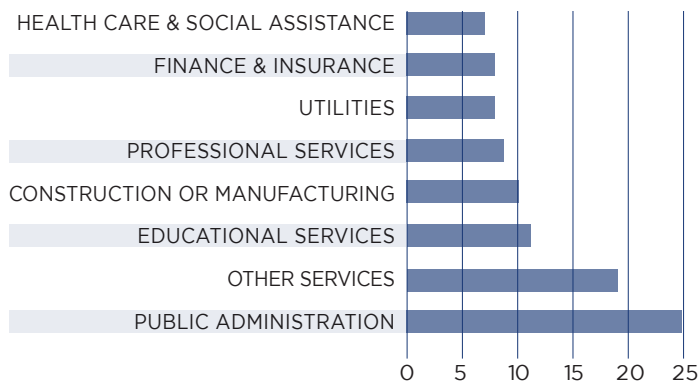
# EVENT AT A GLANCE

Hit the ground running for the 2026 Legislative Session! Whether you're new to the Missouri Capitol or an experienced advocacy professional, you won't want to miss this gathering of your peers, industry experts and government officials. Join us again at the **Millbottom** and equip yourself to achieve your advocacy goals with the latest legislative intel, updates and more to maximize your impact in Jefferson City.

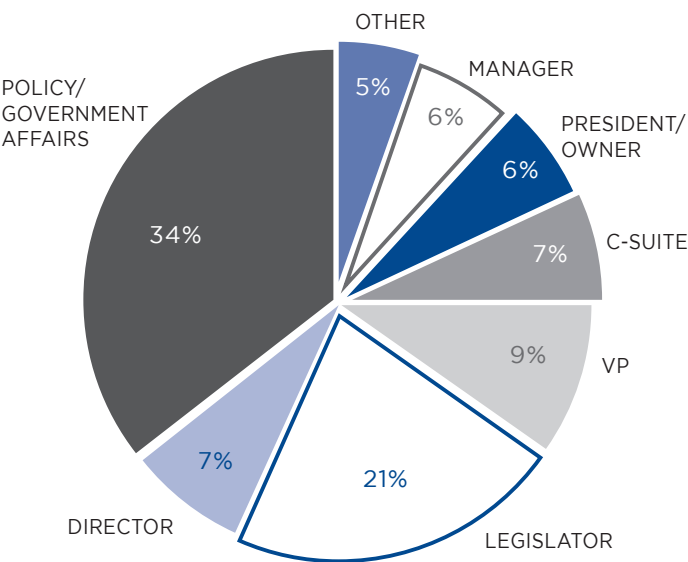
2025 Attendance  
**120**

Email reach  
(# EMAILS WITH SPONSOR BRANDING SENT)  
**24,811**  
(# OF UNIQUE INBOXES)  
**4,161**

Registrants by Industry (%)



Attendees by title (%)



## 2025 Sponsors

Chamber  
Benefit  
Plan.



## Attendee Testimonials

**“Great program in Jefferson City! The Missouri Chamber does a great job advocating for the Missouri business community.”**

**“It’s very informative and respects both sides of the aisle. Great information to take back to our businesses and gives us an opportunity to get some answers that we need.”**

# SPONSORSHIP OPPORTUNITIES

Capitol Insight Benefits	Presenting \$5,000	Gold \$2,500	Silver \$1,500	Bronze \$1,000	Supporter \$500
Number of event attendees included for organization and/or organization's clients	10	6	4	2	1
Organization's logo featured on event landing page	•	•	•	•	•
Organization listed in pre-event email blasts and social media	•	•	•	•	•
Organization's logo displayed during introduction to the event	•	•	•	•	•
Detailed return on investment report following event	•	•	•	•	•
Event graphics provided for sponsor to share on own website, social media, etc.	•	•	•	•	•
Opportunity for organization to provide one piece of promotional material to be included in registration packet or at attendee place setting	•	•	•	•	
Opportunity to introduce a speaker	•	•			
Commercial spot (up to 60 seconds, provided by organization) played during event	•				
Opportunity to collaborate on segment topic and speaker selection	•				
First option to support similar event in 2027	•				

Contact Chris Burruss for more information at [cburruss@mochamber.com](mailto:cburruss@mochamber.com) or 573-634-3511.

**REGISTER HERE**